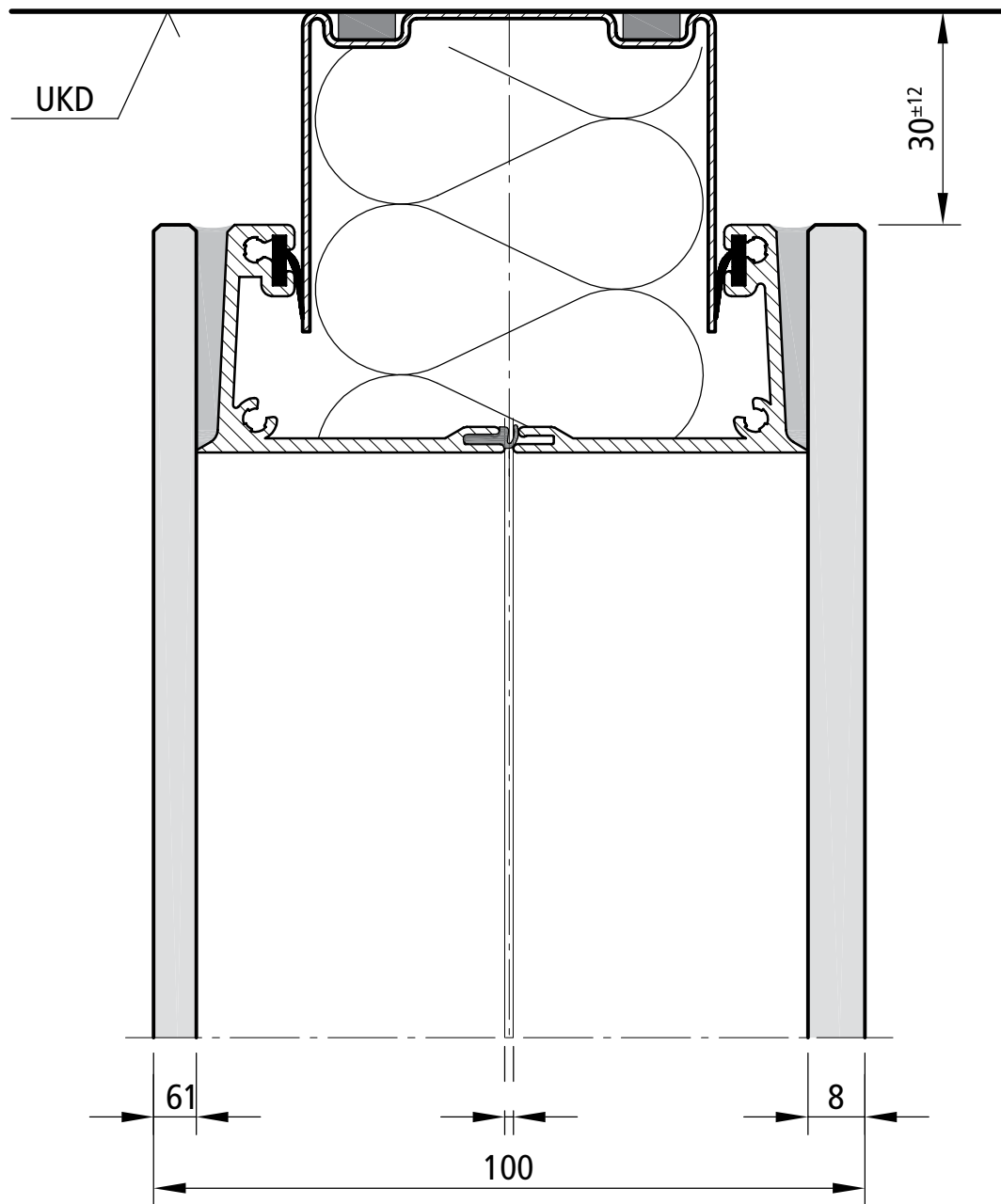
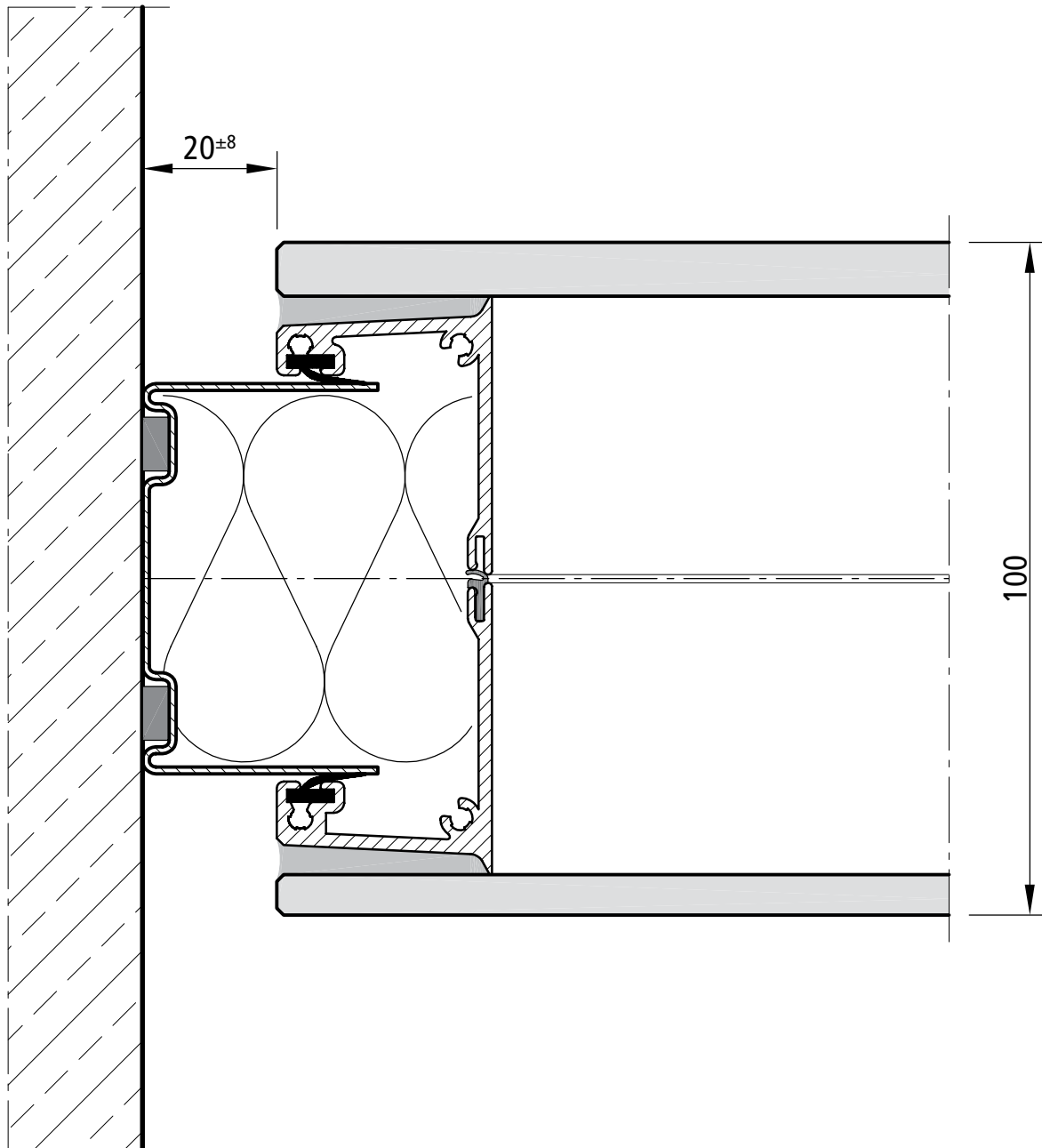


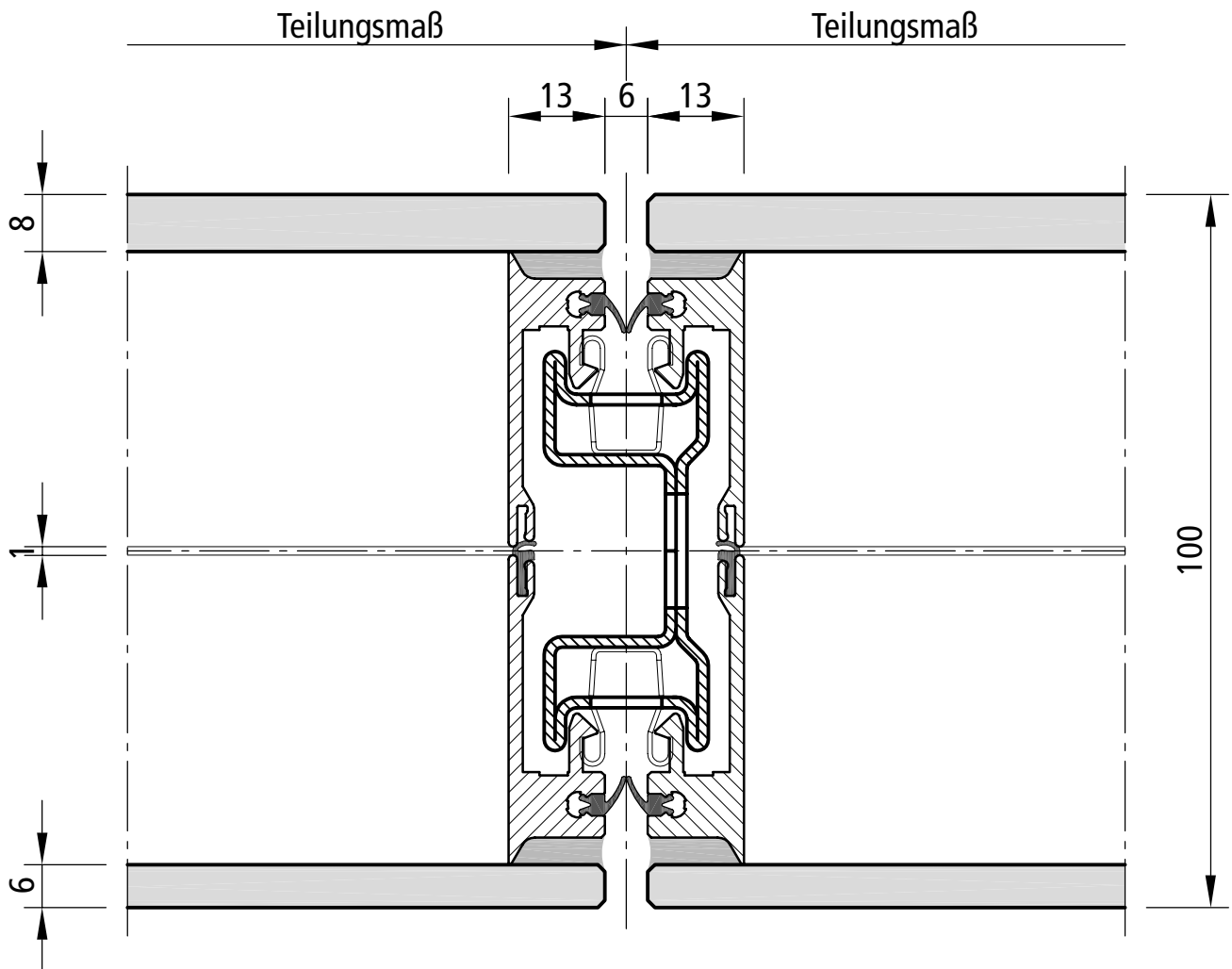
Systemwand SW 100 G / 46 db
Bodenanschluss M 1:1
1752 0002 04



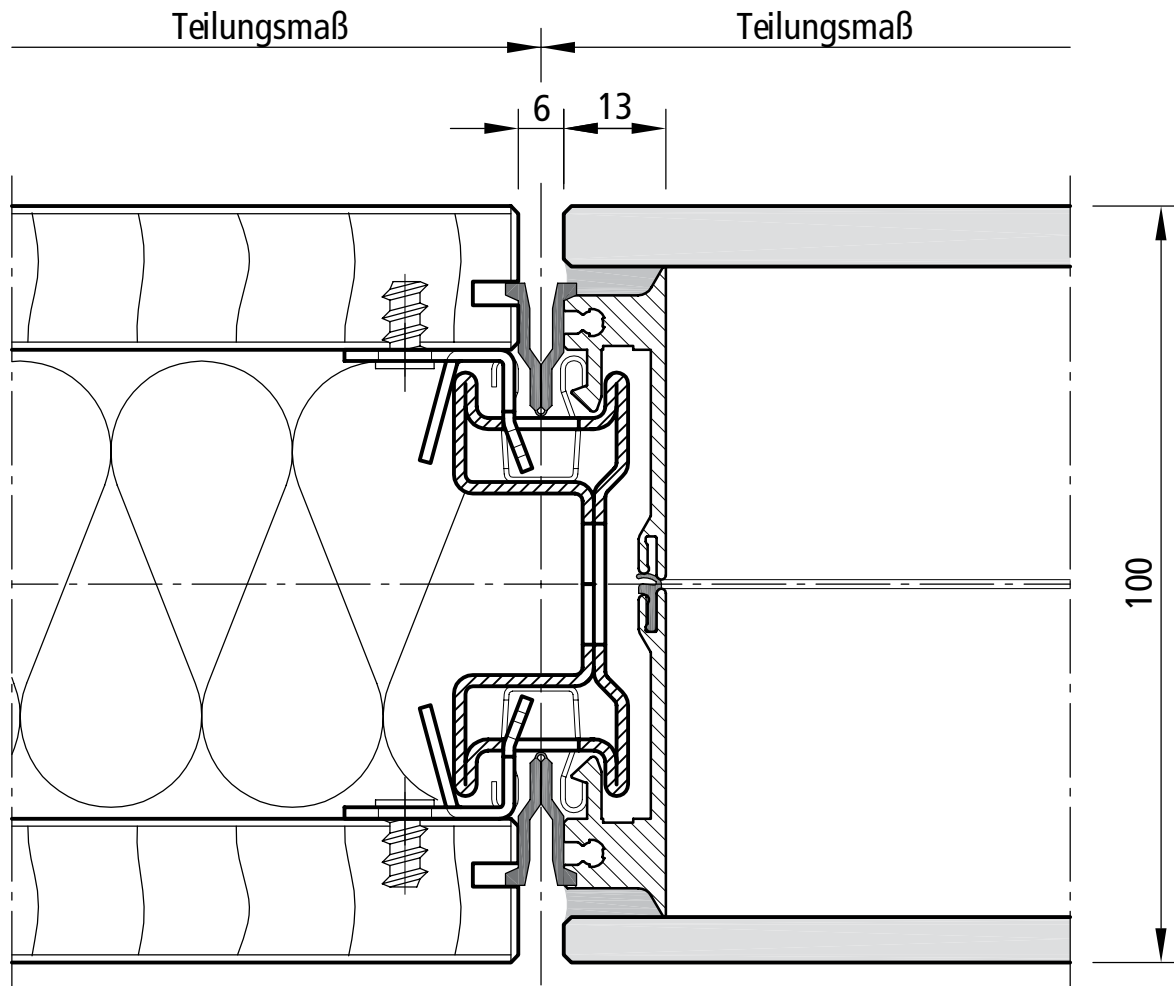
Systemwand SW 100 G / 46 db
Deckenanschluss M 1:1
1752 0020 03



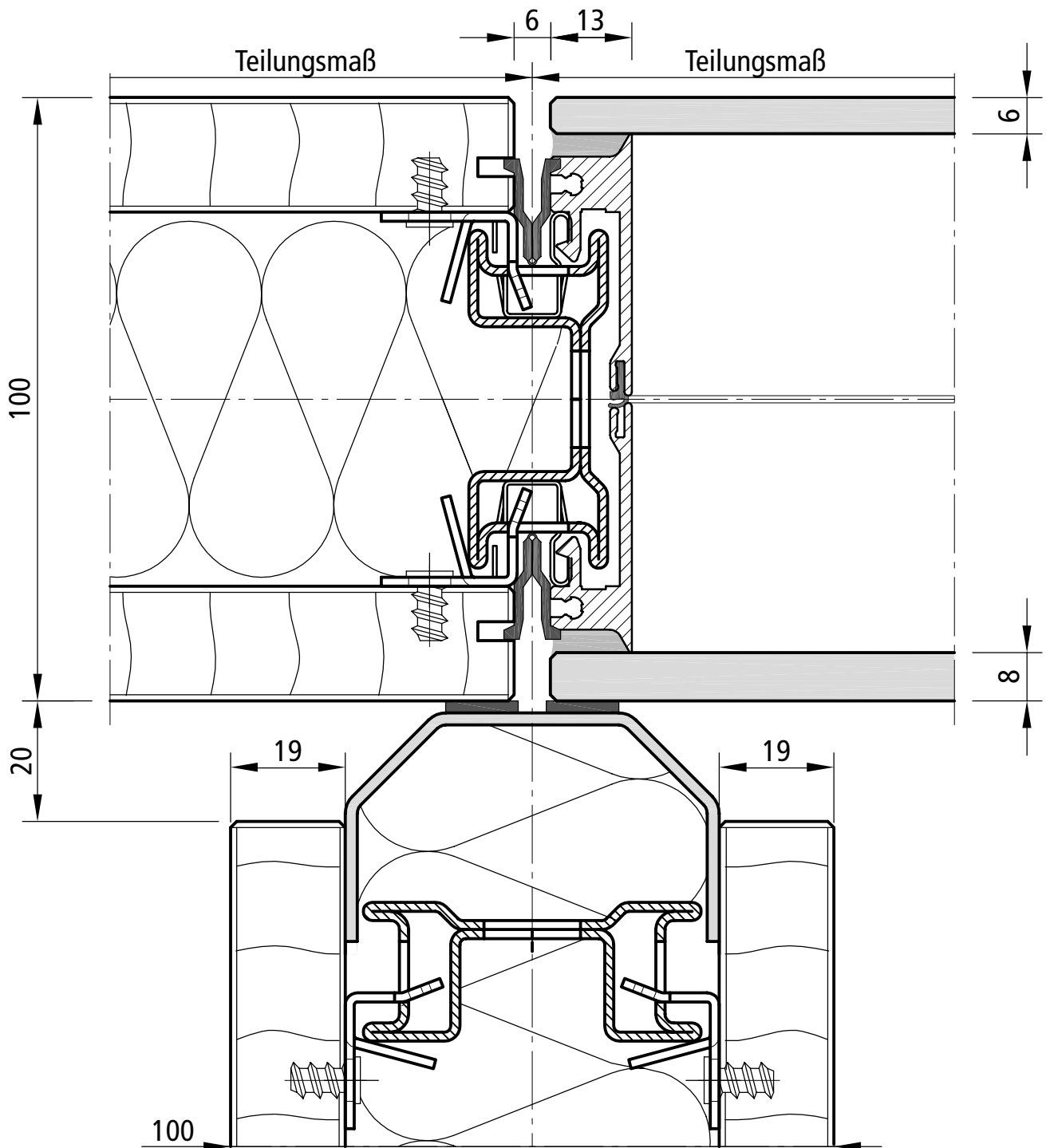
Systemwand SW 100 G / 46 db
Wandanschluss - Variante B M 1:1
1752 0028 01



Systemwand SW 100 G / 46 db
Elementstoß M 1:1
1752 0001 05



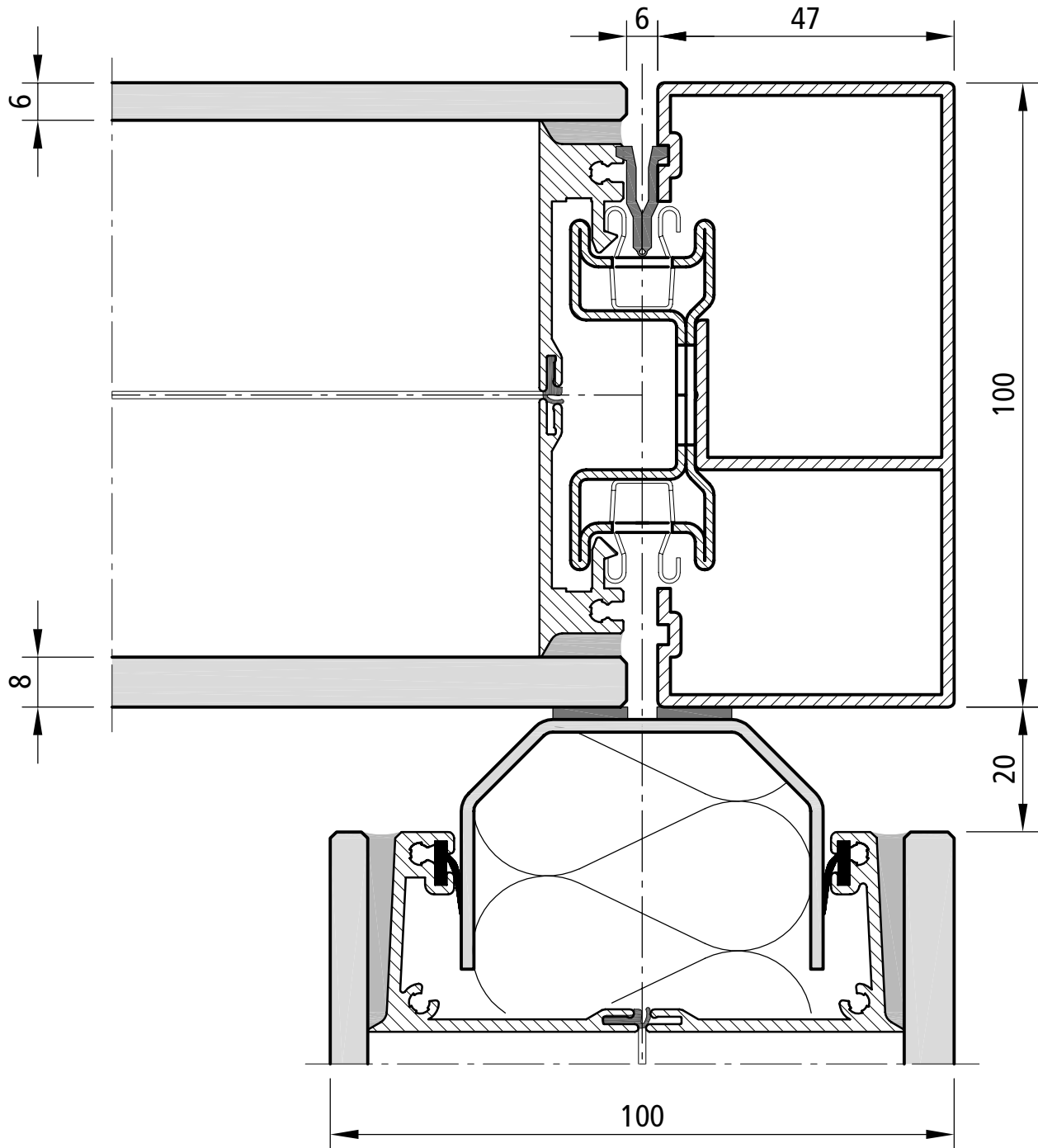
Systemwand SW 100 / SW 100 G / 46 db
Elementstoß M 1:1
1750 0001 05



Systemwand SW 100 / SW100 G / 46 db

T-Stoß 2 M 1:1

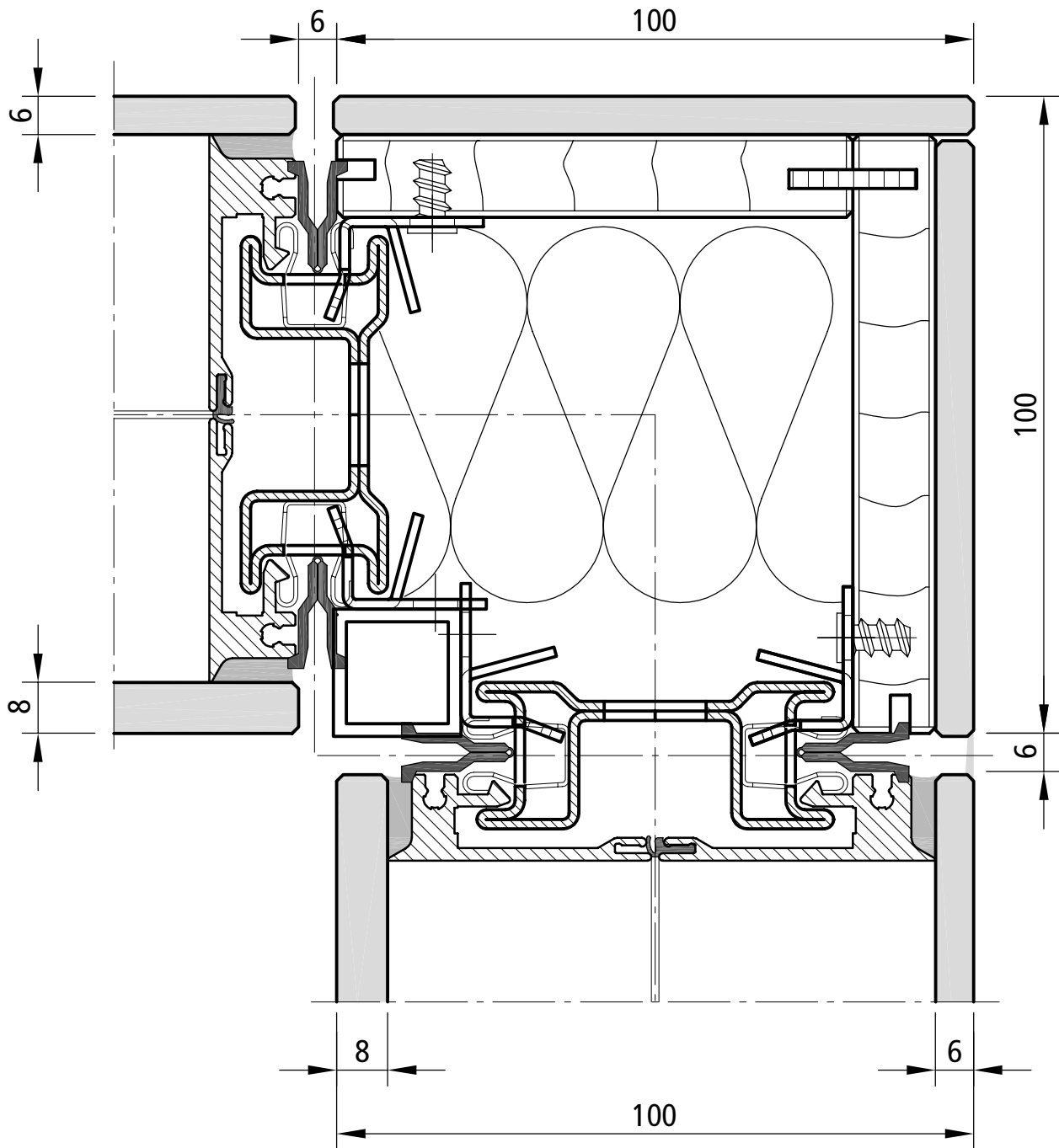
1750 0003 05



Systemwand SW 100 G / 46 db

Wandcke M 1:1

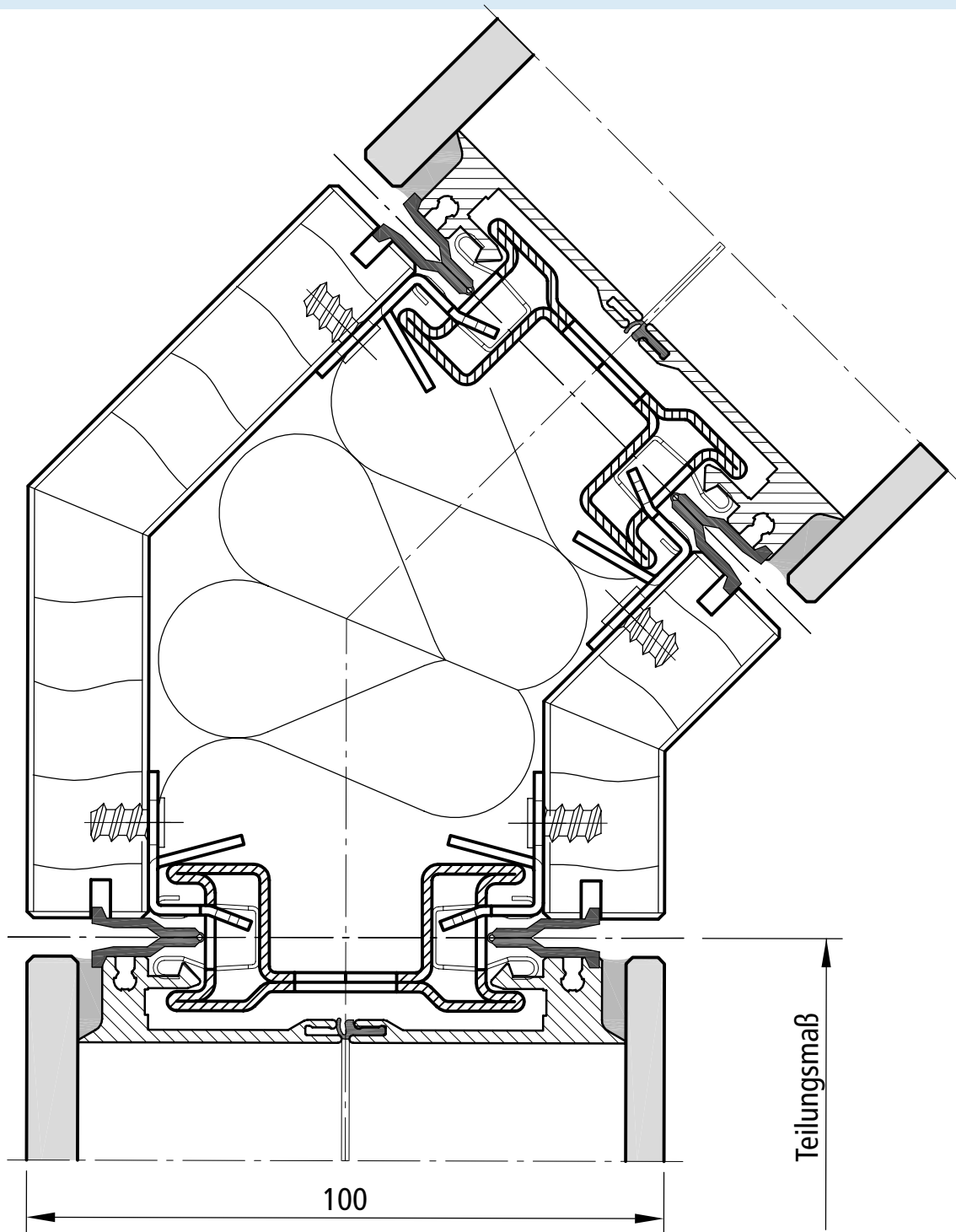
1752 0026 02



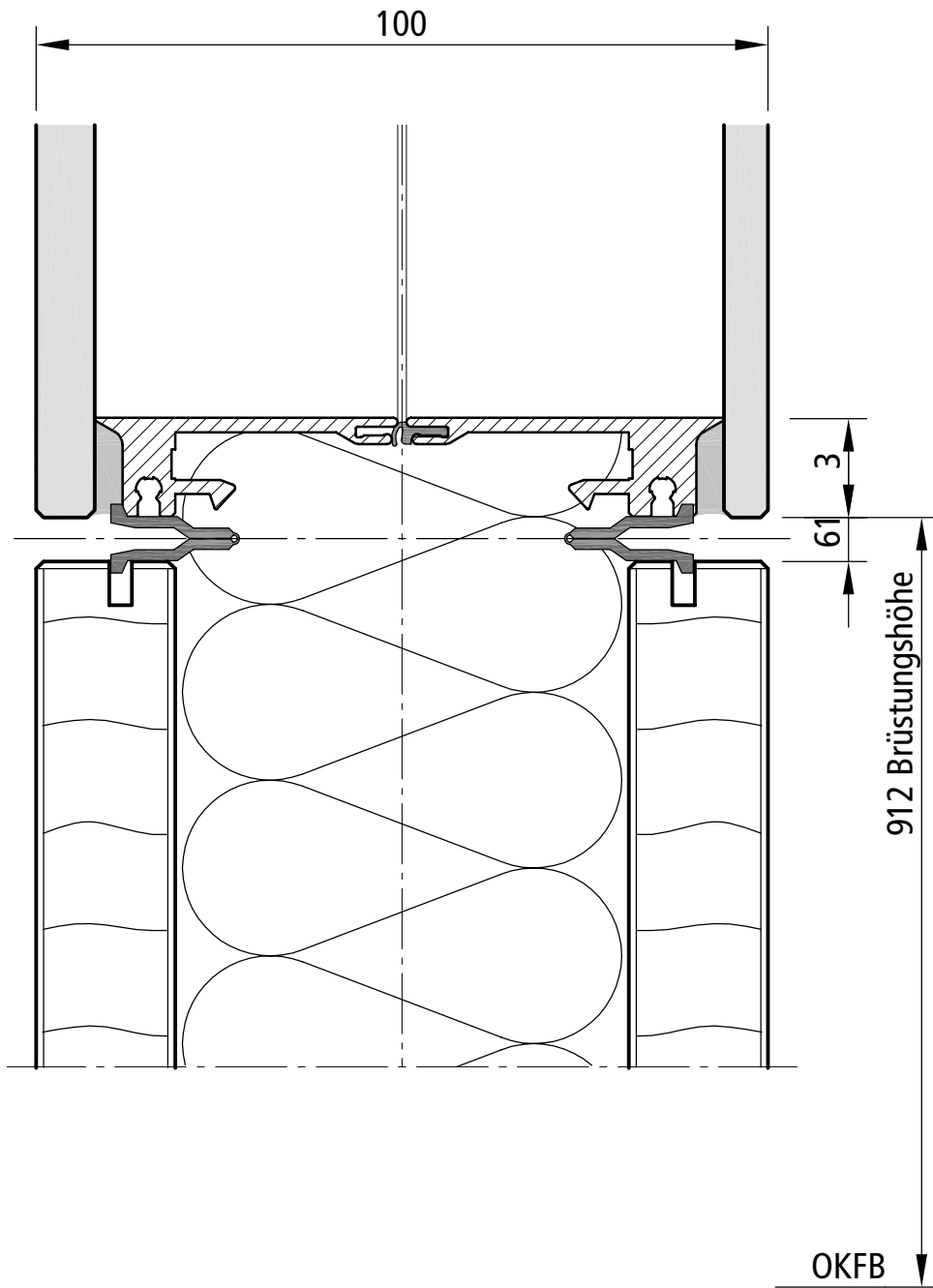
Systemwand SW 100 G / 46 db

Wandcke Glas M 1:1

1752 0045 00



Systemwand SW 100 G / 46 db
135° Ecke M 1:1
1752 0009 04



Systemwand SW 100 / SW 100 G / 46 db
Brüstungselement / Vertikalschnitt M 1:1
1750 0004 04